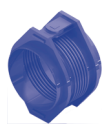


PN 40

Jmenovitá světllost Nominal diameter	Jmenovitá světllost Nominal diameter	Úhlový posuv Angular movement	Ohybová tuhost Angular spring rate	Třecí moment Frictional moments
DN	DN	± deg (°)	N.m/°	N.m/bar
mm	inch			
50	2"	6,0	2,4	0,5
50	2"	12,0	1,2	0,5
65	2 ½"	6,0	3,1	0,8
65	2 ½"	12,0	1,6	0,8
80	3"	3,0	4,3	1,1
80	3"	6,0	2,6	1,1
80	3"	12,0	1,8	1,1
100	4"	3,0	26,0	2,3
100	4"	6,0	14,0	2,3
100	4"	12,0	9,9	2,3
125	5"	3,0	90,0	4,1
125	5"	6,0	50,0	4,1
125	5"	12,0	35,0	4,1
150	6"	3,0	170,0	6,7
150	6"	6,0	95,0	6,7
150	6"	12,0	66,0	6,7
200	8"	3,0	212,0	11,0
200	8"	6,0	118,0	11,0
200	8"	12,0	82,0	11,0
250	10"	3,0	337,0	19,0
250	10"	6,0	187,0	19,0
250	10"	12,0	129,0	19,0
300	12"	2,0	544,0	27,0
300	12"	4,0	302,0	27,0
300	12"	6,0	209,0	27,0
350	14"	2,0	539,0	33,0
350	14"	4,0	300,0	33,0
350	14"	6,0	207,0	33,0
400	16"	2,0	1 129,0	53,0
400	16"	4,0	807,0	53,0
400	16"	6,0	513,0	53,0
500	20"	2,0	2 288,0	98,0
500	20"	4,0	1 634,0	98,0
500	20"	6,0	1 040,0	98,0
600	24"	2,0	3 445,0	185,0
600	24"	4,0	2 460,0	185,0
600	24"	6,0	1 566,0	185,0
700	28"	1,5	6 061,0	281,0
700	28"	2,0	4 041,0	281,0
700	28"	4,0	2 694,0	281,0
800	32"	1,5	8 074,0	405,0
800	32"	2,0	5 383,0	405,0
800	32"	4,0	3 589,0	405,0
900	36"	1,5	10 282,0	509,0
900	36"	2,0	6 855,0	509,0
900	36"	4,0	4 570,0	509,0



MWP



MFP

Stavební délka Overall length	Šířka Width	Přibližná hmotnost App. weight	Stavební délka Overall length	Šířka Width	Přibližná hmotnost App. weight
mm	mm	kg	mm	mm	kg
280	270	17,0	130	235	12,0
330	270	18,0	160	235	13,0
330	280	20,0	140	255	15,0
390	280	22,0	180	255	16,0
340	300	23,0	140	270	18,0
380	300	24,0	170	270	18,0
420	300	25,0	210	270	19,0
360	370	44,0	160	375	30,0
420	370	47,0	200	375	32,0
470	370	50,0	250	375	35,0
340	390	59,0	190	410	42,0
400	390	65,0	210	410	44,0
460	390	70,0	270	410	48,0
370	440	75,0	210	440	52,0
430	440	80,0	240	440	55,0
490	440	85,0	300	440	60,0
420	520	120,0	220	515	80,0
480	520	125,0	250	515	85,0
550	520	130,0	320	515	95,0
420	570	180,0	250	660	130,0
490	570	190,0	270	660	135,0
560	570	200,0	340	660	145,0
470	640	245,0	260	725	165,0
540	640	260,0	310	725	175,0
620	640	275,0	380	725	190,0
510	720	350,0	270	790	225,0
590	720	370,0	330	790	240,0
670	720	390,0	410	790	255,0
590	840	510,0	310	870	315,0
640	840	525,0	360	870	330,0
740	840	550,0	460	870	355,0
610	960	705,0	370	965	450,0
660	960	725,0	390	965	460,0
770	960	765,0	490	965	495,0
630	1 120	1 080,0	460	1 170	730,0
680	1 120	1 105,0	460	1 170	730,0
790	1 120	1 160,0	510	1 170	755,0
620	1 220	1 320,0	500	1 275	885,0
680	1 220	1 355,0	500	1 275	885,0
760	1 220	1 400,0	500	1 275	885,0
1 420	1 260	2 250,0	1 560	1 260	3 055,0
1 480	1 260	2 300,0	1 620	1 260	3 110,0
1 560	1 260	2 370,0	1 700	1 260	3 180,0
1 560	1 365	2 730,0	1 710	1 365	3 760,0
1 620	1 365	2 785,0	1 770	1 365	3 820,0
1 700	1 365	2 865,0	1 850	1 365	3 900,0

PN 40

Jmenovitá světllost Nominal diameter	Jmenovitá světllost Nominal diameter	Úhlový posuv Angular movement	Ohybová tuhost Angular spring rate	Třecí moment Frictional moments
DN	DN	± deg (°)	N.m/°	N.m/bar
mm	inch			
1000	40"	1,5	13 561,0	754,0
1000	40"	2,0	9 040,0	754,0
1000	40"	3,0	6 027,0	754,0
1100	44"	1,5	16 378,0	1 062,0
1100	44"	2,0	10 918,0	1 062,0
1100	44"	3,0	7 279,0	1 062,0
1200	48"	1,5	17 728,0	1 259,0
1200	48"	2,0	11 819,0	1 259,0
1200	48"	3,0	7 879,0	1 259,0



MWP



MFP

Stavební délka Overall length	Šířka Width	Přibližná hmotnost App. weight	Stavební délka Overall length	Šířka Width	Přibližná hmotnost App. weight
mm	mm	kg	mm	mm	kg
1 670	1 470	3 435,0	1 830	1 470	4 780,0
1 720	1 470	3 500,0	1 890	1 470	4 855,0
1 800	1 470	3 600,0	1 970	1 470	4 950,0
1 770	1 580	4 380,0	1 850	1 580	3 800,0
1 820	1 580	4 455,0	1 900	1 580	3 870,0
1 900	1 580	4 570,0	1 980	1 580	3 980,0
1 870	1 685	5 050,0	2 050	1 685	6 890,0
1 920	1 685	5 130,0	2 110	1 685	6 985,0
2 000	1 685	5 265,0	2 190	1 685	7 115,0