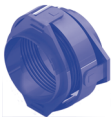

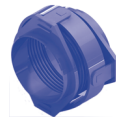


PN 40

| Jmenovitá světllost Nominal diameter | Jmenovitá světllost Nominal diameter | Úhlový posuv Angular movement | Ohybová tuhost Angular spring rate | Třecí moment Frictional moments |  MWC | | |  MFC | | |
|---|---|----------------------------------|---------------------------------------|------------------------------------|--|----------------|-----------------------------------|---|----------------|-----------------------------------|
| DN | DN | ± deg (°) | N.m/° | N.m/bar | Stavební délka Overall length | Šířka Width | Přibližná hmotnost App. weight | Stavební délka Overall length | Šířka Width | Přibližná hmotnost App. weight |
| mm | inch | | | | mm | mm | kg | mm | mm | kg |
| 50 | 2" | 6,0 | 2,4 | 0,5 | 360 | 245 | 23,0 | 190 | 250 | 9,0 |
| 50 | 2" | 12,0 | 1,2 | 0,5 | 390 | 245 | 23,0 | 230 | 250 | 19,0 |
| 65 | 2 1/2" | 6,0 | 3,1 | 0,8 | 400 | 270 | 29,0 | 190 | 275 | 25,0 |
| 65 | 2 1/2" | 12,0 | 1,6 | 0,8 | 430 | 270 | 30,0 | 250 | 275 | 26,0 |
| 80 | 3" | 3,0 | 4,3 | 1,1 | 390 | 270 | 32,0 | 170 | 275 | 27,0 |
| 80 | 3" | 6,0 | 2,6 | 1,1 | 400 | 270 | 32,0 | 210 | 275 | 28,0 |
| 80 | 3" | 12,0 | 1,8 | 1,1 | 430 | 270 | 33,0 | 290 | 275 | 30,0 |
| 100 | 4" | 3,0 | 26,0 | 2,3 | 430 | 350 | 60,0 | 200 | 360 | 49,0 |
| 100 | 4" | 6,0 | 14,0 | 2,3 | 450 | 350 | 65,0 | 230 | 360 | 51,0 |
| 100 | 4" | 12,0 | 9,9 | 2,3 | 490 | 350 | 65,0 | 340 | 360 | 56,0 |
| 125 | 5" | 3,0 | 90,0 | 4,1 | 410 | 375 | 80,0 | 210 | 385 | 60,0 |
| 125 | 5" | 6,0 | 50,0 | 4,1 | 430 | 375 | 80,0 | 250 | 385 | 65,0 |
| 125 | 5" | 12,0 | 35,0 | 4,1 | 470 | 375 | 80,0 | 350 | 385 | 70,0 |
| 150 | 6" | 3,0 | 170,0 | 6,7 | 470 | 420 | 105,0 | 240 | 430 | 80,0 |
| 150 | 6" | 6,0 | 95,0 | 6,7 | 490 | 420 | 105,0 | 280 | 430 | 85,0 |
| 150 | 6" | 12,0 | 66,0 | 6,7 | 530 | 420 | 110,0 | 390 | 430 | 95,0 |
| 200 | 8" | 3,0 | 212,0 | 11,0 | 510 | 455 | 150,0 | 260 | 465 | 115,0 |
| 200 | 8" | 6,0 | 118,0 | 11,0 | 530 | 455 | 150,0 | 300 | 465 | 120,0 |
| 200 | 8" | 12,0 | 82,0 | 11,0 | 580 | 455 | 160,0 | 430 | 465 | 135,0 |
| 250 | 10" | 3,0 | 337,0 | 19,0 | 570 | 585 | 250,0 | 330 | 600 | 205,0 |
| 250 | 10" | 6,0 | 187,0 | 19,0 | 600 | 585 | 255,0 | 380 | 600 | 210,0 |
| 250 | 10" | 12,0 | 129,0 | 19,0 | 660 | 585 | 265,0 | 480 | 600 | 225,0 |
| 300 | 12" | 2,0 | 544,0 | 27,0 | 620 | 635 | 345,0 | 340 | 650 | 265,0 |
| 300 | 12" | 4,0 | 302,0 | 27,0 | 640 | 635 | 350,0 | 380 | 650 | 275,0 |
| 300 | 12" | 6,0 | 209,0 | 27,0 | 660 | 635 | 355,0 | 440 | 650 | 290,0 |
| 350 | 14" | 2,0 | 539,0 | 33,0 | 700 | 685 | 485,0 | 390 | 700 | 365,0 |
| 350 | 14" | 4,0 | 300,0 | 33,0 | 720 | 685 | 495,0 | 440 | 700 | 375,0 |
| 350 | 14" | 6,0 | 207,0 | 33,0 | 750 | 685 | 500,0 | 480 | 700 | 385,0 |
| 400 | 16" | 2,0 | 1 129,0 | 53,0 | 780 | 775 | 715,0 | 450 | 790 | 525,0 |
| 400 | 16" | 4,0 | 807,0 | 53,0 | 810 | 775 | 720,0 | 500 | 790 | 540,0 |
| 400 | 16" | 6,0 | 513,0 | 53,0 | 840 | 775 | 730,0 | 550 | 790 | 550,0 |
| 500 | 20" | 2,0 | 2 288,0 | 98,0 | 860 | 875 | 1 000,0 | 520 | 890 | 740,0 |
| 500 | 20" | 4,0 | 1 634,0 | 98,0 | 890 | 875 | 1 010,0 | 570 | 890 | 755,0 |
| 500 | 20" | 6,0 | 1 040,0 | 98,0 | 920 | 875 | 1 020,0 | 630 | 890 | 775,0 |
| 600 | 24" | 2,0 | 3 445,0 | 185,0 | 930 | 1 020 | 1 535,0 | 590 | 1 040 | 1 150,0 |
| 600 | 24" | 4,0 | 2 460,0 | 185,0 | 970 | 1 020 | 1 550,0 | 650 | 1 040 | 1 180,0 |
| 600 | 24" | 6,0 | 1 566,0 | 185,0 | 1 010 | 1 020 | 1 570,0 | 720 | 1 040 | 1 215,0 |
| 700 | 28" | 1,5 | 6 061,0 | 281,0 | 1 000 | 1 200 | 1 960,0 | 640 | 1 220 | 1 450,0 |
| 700 | 28" | 2,0 | 4 041,0 | 281,0 | 1 010 | 1 200 | 1 965,0 | 650 | 1 220 | 1 455,0 |
| 700 | 28" | 4,0 | 2 694,0 | 281,0 | 1 060 | 1 200 | 1 990,0 | 730 | 1 220 | 1 500,0 |
| 800 | 32" | 1,5 | 8 074,0 | 405,0 | 1 850 | 1 330 | 3 430,0 | 890 | 1 330 | 3 475,0 |
| 800 | 32" | 2,0 | 5 383,0 | 405,0 | 1 870 | 1 330 | 3 445,0 | 900 | 1 330 | 3 480,0 |
| 800 | 32" | 4,0 | 3 589,0 | 405,0 | 1 920 | 1 330 | 3 485,0 | 960 | 1 330 | 3 535,0 |
| 900 | 36" | 1,5 | 10 282,0 | 509,0 | 2 050 | 1 480 | 4 200,0 | 1 670 | 1 480 | 4 950,0 |
| 900 | 36" | 2,0 | 6 855,0 | 509,0 | 2 060 | 1 480 | 4 205,0 | 1 680 | 1 480 | 4 960,0 |
| 900 | 36" | 4,0 | 4 570,0 | 509,0 | 2 130 | 1 480 | 4 265,0 | 1 740 | 1 480 | 5 015,0 |
| 1000 | 40" | 1,5 | 13 561,0 | 754,0 | 2 200 | 1 600 | 5 500,0 | 1 840 | 1 600 | 6 570,0 |
| 1000 | 40" | 2,0 | 9 040,0 | 754,0 | 2 220 | 1 600 | 5 520,0 | 1 850 | 1 600 | 6 580,0 |
| 1000 | 40" | 3,0 | 6 027,0 | 754,0 | 2 250 | 1 600 | 5 555,0 | 1 890 | 1 600 | 6 630,0 |

PN 40

| Jmenovitá světlost Nominal diameter | Jmenovitá světlost Nominal diameter | Úhlový posuv Angular movement | Ohybová tuhost Angular spring rate | Třecí moment Frictional moments |
|--|--|----------------------------------|---------------------------------------|------------------------------------|
| DN | DN | ± deg (°) | N.m/° | N.m/bar |
| mm | inch | | | |
| 1100 | 44" | 1,5 | 16 378,0 | 1 062,0 |
| 1100 | 44" | 2,0 | 10 918,0 | 1 062,0 |
| 1100 | 44" | 3,0 | 7 279,0 | 1 062,0 |
| 1200 | 48" | 1,5 | 17 728,0 | 1 259,0 |
| 1200 | 48" | 2,0 | 11 819,0 | 1 259,0 |
| 1200 | 48" | 3,0 | 7 879,0 | 1 259,0 |



MWC

| Stavební délka Overall length | Šířka Width | Přibližná hmotnost App. weight |
|----------------------------------|----------------|-----------------------------------|
| mm | mm | kg |
| 2 410 | 1 750 | 7 100,0 |
| 2 430 | 1 750 | 7 120,0 |
| 2 460 | 1 750 | 7 150,0 |
| 2 610 | 1 890 | 8 925,0 |
| 2 630 | 1 890 | 8 950,0 |
| 2 670 | 1 890 | 9 005,0 |



MFC

| Stavební délka Overall length | Šířka Width | Přibližná hmotnost App. weight |
|----------------------------------|----------------|-----------------------------------|
| mm | mm | kg |
| 1 830 | 1 750 | 5 970,0 |
| 1 850 | 1 750 | 5 995,0 |
| 1 890 | 1 750 | 6 045,0 |
| 2 160 | 1 890 | 10 260,0 |
| 2 180 | 1 890 | 10 285,0 |
| 2 220 | 1 890 | 10 345,0 |