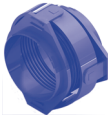

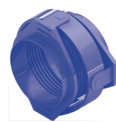


# PN 25

Jmenovitá světllost Nominal diameter	Jmenovitá světllost Nominal diameter	Úhlový posuv Angular movement	Ohybová tuhost Angular spring rate	Třecí moment Frictional moments	 MWC	 MFC				
DN	DN	± deg (°)	N.m/°	N.m/bar	Stavební délka Overall length	Šířka Width	Přibližná hmotnost App. weight	Stavební délka Overall length	Šířka Width	Přibližná hmotnost App. weight
mm	inch				mm	mm	kg	mm	mm	kg
50	2"	6,0	2,4	0,5	300	245	20,0	150	250	16,0
50	2"	12,0	1,2	0,5	330	245	20,0	220	250	17,0
65	2 1/2"	6,0	2,3	0,8	360	270	27,0	170	275	23,0
65	2 1/2"	12,0	1,2	0,8	390	270	27,0	250	275	24,0
80	3"	3,0	3,2	1,1	350	270	29,0	150	275	25,0
80	3"	6,0	1,9	1,1	360	270	29,0	200	275	26,0
80	3"	12,0	1,4	1,1	390	270	30,0	280	275	28,0
100	4"	3,0	20,0	1,8	390	350	53,0	180	360	41,0
100	4"	6,0	11,0	1,8	410	350	54,0	230	360	43,0
100	4"	12,0	7,8	1,8	450	350	56,0	330	360	48,0
125	5"	3,0	71,0	3,4	390	375	65,0	190	385	53,0
125	5"	6,0	40,0	3,4	410	375	65,0	240	385	56,0
125	5"	12,0	27,0	3,4	450	375	70,0	350	385	65,0
150	6"	3,0	135,0	5,8	420	420	85,0	190	430	65,0
150	6"	6,0	75,0	5,8	440	420	90,0	260	430	75,0
150	6"	12,0	52,0	5,8	480	420	90,0	380	430	80,0
200	8"	3,0	169,0	9,6	460	455	130,0	220	465	100,0
200	8"	6,0	94,0	9,6	480	455	135,0	280	465	105,0
200	8"	12,0	65,0	9,6	530	455	140,0	410	465	115,0
250	10"	3,0	268,0	17,0	490	585	200,0	260	600	150,0
250	10"	6,0	149,0	17,0	520	585	205,0	310	600	155,0
250	10"	12,0	103,0	17,0	580	585	210,0	460	600	180,0
300	12"	2,0	375,0	24,0	540	635	255,0	270	650	185,0
300	12"	4,0	209,0	24,0	560	635	260,0	310	650	195,0
300	12"	6,0	144,0	24,0	580	635	265,0	410	650	210,0
350	14"	2,0	374,0	33,0	580	685	360,0	300	700	255,0
350	14"	4,0	208,0	33,0	600	685	365,0	340	700	260,0
350	14"	6,0	144,0	33,0	630	685	370,0	440	700	280,0
400	16"	2,0	908,0	43,0	680	775	535,0	350	790	365,0
400	16"	4,0	649,0	43,0	710	775	540,0	400	790	375,0
400	16"	6,0	413,0	43,0	740	775	550,0	490	790	400,0
500	20"	2,0	1 787,0	82,0	760	875	790,0	420	890	540,0
500	20"	4,0	1 276,0	82,0	790	875	795,0	470	890	555,0
500	20"	6,0	812,0	82,0	820	875	810,0	530	890	575,0
600	24"	2,0	2 708,0	139,0	830	1 020	1 185,0	480	1 040	815,0
600	24"	4,0	1 934,0	139,0	870	1 020	1 200,0	540	1 040	845,0
600	24"	6,0	1 231,0	139,0	910	1 020	1 220,0	610	1 040	875,0
700	28"	1,5	6 840,0	221,0	890	1 150	1 600,0	510	1 170	1 085,0
700	28"	2,0	4 560,0	221,0	900	1 150	1 610,0	530	1 170	1 100,0
700	28"	4,0	3 040,0	221,0	940	1 150	1 635,0	610	1 170	1 150,0
800	32"	1,5	9 095,0	327,0	1 000	1 285	2 330,0	620	1 310	1 620,0
800	32"	2,0	6 063,0	327,0	1 010	1 285	2 345,0	640	1 310	1 640,0
800	32"	4,0	4 042,0	327,0	1 060	1 285	2 380,0	720	1 310	1 700,0
900	36"	1,5	11 547,0	461,0	1 710	1 505	2 990,0	1 570	1 505	3 605,0
900	36"	2,0	7 698,0	461,0	1 730	1 505	3 010,0	1 590	1 505	3 625,0
900	36"	4,0	5 132,0	461,0	1 790	1 505	3 055,0	1 650	1 505	3 680,0
1000	40"	1,5	13 658,0	632,0	1 840	1 615	3 835,0	1 710	1 615	4 695,0
1000	40"	2,0	9 105,0	632,0	1 860	1 615	3 855,0	1 730	1 615	4 720,0
1000	40"	3,0	6 070,0	632,0	1 890	1 615	3 890,0	1 760	1 615	4 755,0

PN 25

Jmenovitá světlost Nominal diameter	Jmenovitá světlost Nominal diameter	Úhlový posuv Angular movement	Ohybová tuhost Angular spring rate	Třecí moment Frictional moments
DN	DN	± deg (°)	N.m/°	N.m/bar
mm	inch			
1100	44"	1,5	16 593,0	918,0
1100	44"	2,0	11 062,0	918,0
1100	44"	3,0	7 375,0	918,0
1200	48"	1,5	17 835,0	1 083,0
1200	48"	2,0	11 890,0	1 083,0
1200	48"	3,0	7 927,0	1 083,0
1300	52"	1,0	31 961,0	1 284,0
1300	52"	1,5	23 971,0	1 284,0
1300	52"	3,0	15 981,0	1 284,0
1400	56"	1,0	51 468,0	1 722,0
1400	56"	1,5	38 601,0	1 722,0
1400	56"	3,0	25 734,0	1 722,0
1500	60"	1,0	62 788,0	1 966,0
1500	60"	1,5	47 091,0	1 966,0
1500	60"	3,0	31 394,0	1 966,0
1600	64"	1,0	75 655,0	2 385,0
1600	64"	1,5	45 393,0	2 385,0
1600	64"	3,0	37 828,0	2 385,0



MWC

Stavební délka Overall length	Šířka Width	Přibližná hmotnost App. weight
mm	mm	kg
1 990	1 720	4 695,0
2 000	1 720	4 715,0
2 040	1 720	4 765,0
2 090	1 850	6 090,0
2 110	1 850	6 115,0
2 150	1 850	6 165,0
2 280	1 990	7 375,0
2 300	1 990	7 405,0
2 360	1 990	7 485,0
2 410	2 090	8 890,0
2 430	2 090	8 920,0
2 490	2 090	9 015,0
2 470	2 210	10 315,0
2 490	2 210	10 345,0
2 560	2 210	10 460,0
2 580	2 315	12 510,0
2 610	2 315	12 565,0
2 680	2 315	12 695,0



MFC

Stavební délka Overall length	Šířka Width	Přibližná hmotnost App. weight
mm	mm	kg
1 840	1 720	5 740,0
1 860	1 720	5 770,0
1 890	1 720	5 810,0
1 940	1 850	7 300,0
1 960	1 850	7 330,0
1 990	1 850	7 370,0
2 110	1 990	8 750,0
2 130	1 990	8 785,0
2 190	1 990	8 870,0
2 230	2 090	10 440,0
2 250	2 090	10 470,0
2 310	2 090	10 575,0
2 290	2 210	11 975,0
2 310	2 210	12 015,0
2 380	2 210	12 140,0
2 430	2 315	14 635,0
2 460	2 315	14 695,0
2 530	2 315	14 845,0