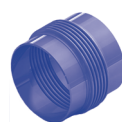


# PN 6

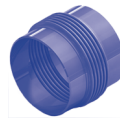
Jmenovitá světllost Nominal diameter	Jmenovitá světllost Nominal diameter	Axiální posuv Axial movement	Axiální tuhost Spring rate	Efektivní průřez Effective area	Stavební délka Overall length	Přibližná hmotnost App. weight	Stavební délka Overall length	Přibližná hmotnost App. weight
DN	DN	± mm	N/mm	cm <sup>2</sup>	mm	kg	mm	kg
mm	inch							
25	1"	6,0	32,0	11	150	0,3	90	1,9
25	1"	12,5	18,0	11	200	0,4	120	1,9
25	1"	25,0	9,0	11	320	0,6	210	2,0
25	1"	37,5	6,0	11	460	0,8	300	2,2
32	1 ¼"	6,0	31,0	17	150	0,4	90	2,9
32	1 ¼"	12,5	15,0	17	210	0,6	130	3,0
32	1 ¼"	25,0	8,0	17	340	0,9	220	3,0
32	1 ¼"	37,5	5,0	17	460	1,1	310	3,0
40	1 ½"	6,0	34,0	22	200	0,7	90	3,0
40	1 ½"	12,5	19,0	22	220	0,7	130	3,0
40	1 ½"	25,0	10,0	22	340	1,0	220	4,0
40	1 ½"	37,5	6,0	22	460	1,3	310	4,0
50	2"	6,0	76,0	36	220	1,1	90	4,0
50	2"	12,5	38,0	36	250	1,1	130	4,0
50	2"	25,0	19,0	36	370	1,6	220	4,0
50	2"	37,5	13,0	36	480	2,0	320	4,0
65	2 ½"	6,0	51,0	53	230	1,8	90	5,0
65	2 ½"	12,5	31,0	53	260	1,8	130	5,0
65	2 ½"	25,0	15,0	53	370	2,4	210	5,0
65	2 ½"	37,5	10,0	53	480	2,8	300	5,0
80	3"	6,0	49,0	76	240	2,3	100	7,0
80	3"	12,5	29,0	76	280	2,5	140	8,0
80	3"	25,0	15,0	76	370	2,9	230	8,0
80	3"	37,5	10,0	76	500	4,0	330	8,0
100	4"	12,5	104,0	122	250	3,0	130	9,0
100	4"	25,0	56,0	122	350	4,0	200	9,0
100	4"	37,5	38,0	122	440	5,0	270	10,0
100	4"	50,0	32,0	122	510	6,0	320	10,0
125	5"	12,5	247,0	181	250	5,0	130	12,0
125	5"	25,0	133,0	181	350	6,0	210	12,0
125	5"	37,5	91,0	181	440	7,0	280	13,0
125	5"	50,0	75,0	181	530	8,0	330	14,0
150	6"	12,5	331,0	257	260	6,0	140	13,0
150	6"	25,0	178,0	257	360	7,0	220	14,0
150	6"	37,5	122,0	257	460	9,0	300	15,0
150	6"	50,0	101,0	257	550	11,0	350	16,0
200	8"	12,5	393,0	434	270	9,0	150	20,0
200	8"	25,0	250,0	434	360	12,0	210	22,0
200	8"	37,5	183,0	434	430	14,0	260	23,0
200	8"	50,0	145,0	434	540	17,0	320	25,0
200	8"	62,5	120,0	434	650	21,0	380	27,0
250	10"	12,5	577,0	660	250	10,0	130	25,0
250	10"	25,0	262,0	660	380	15,0	220	29,0
250	10"	37,5	192,0	660	450	18,0	280	31,0
250	10"	50,0	152,0	660	560	22,0	340	33,0
250	10"	62,5	137,0	660	650	26,0	370	34,0
300	12"	12,5	583,0	918	250	12,0	140	34,0
300	12"	25,0	265,0	918	390	18,0	230	38,0
300	12"	37,5	194,0	918	460	22,0	300	41,0
300	12"	50,0	153,0	918	570	27,0	360	43,0
300	12"	62,5	139,0	918	670	32,0	390	45,0


**MWA**

**MFA**

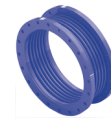
PN 6

Jmenovitá světllost Nominal diameter	Jmenovitá světllost Nominal diameter	Axiální posuv Axial movement	Axiální tuhost Spring rate	Efektivní průřez Effective area
DN	DN	± mm	N/mm	cm <sup>2</sup>
mm	inch			
350	14"	12,5	481,0	1 108
350	14"	25,0	219,0	1 108
350	14"	37,5	160,0	1 108
350	14"	50,0	127,0	1 108
350	14"	62,5	115,0	1 108
400	16"	12,5	941,0	1 451
400	16"	25,0	672,0	1 451
400	16"	37,5	523,0	1 451
400	16"	50,0	362,0	1 451
400	16"	62,5	314,0	1 451
500	20"	12,5	1 036,0	2 226
500	20"	25,0	740,0	2 226
500	20"	37,5	575,0	2 226
500	20"	50,0	398,0	2 226
500	20"	62,5	345,0	2 226
600	24"	12,5	1 103,0	3 166
600	24"	25,0	788,0	3 166
600	24"	37,5	613,0	3 166
600	24"	50,0	424,0	3 166
600	24"	62,5	368,0	3 166
700	28"	12,5	1 149,0	4 274
700	28"	25,0	821,0	4 274
700	28"	37,5	638,0	4 274
700	28"	50,0	442,0	4 274
700	28"	62,5	383,0	4 274
800	32"	12,5	1 178,0	5 546
800	32"	25,0	842,0	5 546
800	32"	37,5	655,0	5 546
800	32"	50,0	453,0	5 546
800	32"	62,5	393,0	5 546
900	36"	12,5	1 193,0	6 968
900	36"	25,0	852,0	6 968
900	36"	37,5	663,0	6 968
900	36"	50,0	459,0	6 968
900	36"	62,5	398,0	6 968
1000	40"	12,5	1 962,0	8 600
1000	40"	25,0	1 401,0	8 600
1000	40"	37,5	1 090,0	8 600
1000	40"	50,0	755,0	8 600
1000	40"	62,5	654,0	8 600
1100	44"	12,5	1 969,0	10 412
1100	44"	25,0	1 406,0	10 412
1100	44"	37,5	1 094,0	10 412
1100	44"	50,0	757,0	10 412
1100	44"	62,5	656,0	10 412
1200	48"	12,5	1 796,0	12 339
1200	48"	25,0	1 283,0	12 339
1200	48"	37,5	998,0	12 339
1200	48"	50,0	691,0	12 339
1200	48"	62,5	599,0	12 339
1300	52"	25,0	2 044,0	14 617
1300	52"	37,5	1 226,0	14 617
1300	52"	50,0	876,0	14 617
1300	52"	62,5	681,0	14 617
1300	52"	75,0	557,0	14 617



MWA

Stavební délka Overall length	Přibližná hmotnost App. weight
mm	kg
260	14,0
400	21,0
480	25,0
590	31,0
690	36,0
290	19,0
370	25,0
430	29,0
570	38,0
680	45,0
290	24,0
370	32,0
430	36,0
570	49,0
680	58,0
290	30,0
370	39,0
430	44,0
570	59,0
680	70,0
290	34,0
370	44,0
430	51,0
570	70,0
680	80,0
290	39,0
370	51,0
430	59,0
570	80,0
680	95,0
290	52,0
370	65,0
430	75,0
570	100,0
680	120,0
290	70,0
380	90,0
440	105,0
590	145,0
700	170,0
290	80,0
380	100,0
440	120,0
590	160,0
700	190,0
290	85,0
380	115,0
440	130,0
590	180,0
700	210,0
290	105,0
410	150,0
590	210,0
720	260,0
850	310,0

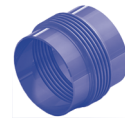


MFA

Stavební délka Overall length	Přibližná hmotnost App. weight
mm	kg
150	46,0
250	51,0
320	54,0
390	57,0
420	59,0
180	58,0
230	60,0
270	65,0
370	70,0
410	75,0
190	75,0
230	80,0
280	85,0
370	95,0
420	100,0
190	95,0
230	100,0
280	105,0
370	115,0
420	120,0
190	120,0
240	125,0
280	130,0
370	145,0
420	150,0
190	155,0
240	165,0
290	170,0
380	185,0
420	190,0
200	180,0
240	190,0
290	195,0
380	215,0
430	220,0
210	210,0
250	225,0
300	235,0
400	265,0
450	275,0
210	255,0
260	270,0
310	285,0
410	315,0
460	330,0
210	315,0
260	335,0
310	350,0
410	385,0
460	400,0
220	390,0
300	425,0
380	460,0
460	495,0
540	530,0

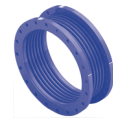
# PN 6

Jmenovitá světllost Nominal diameter	Jmenovitá světllost Nominal diameter	Axiální posuv Axial movement	Axiální tuhost Spring rate	Efektivní průřez Effective area
DN	DN	± mm	N/mm	cm <sup>2</sup>
mm	inch			
1400	56"	25,0	2 194,0	16 838
1400	56"	37,5	1 316,0	16 838
1400	56"	50,0	940,0	16 838
1400	56"	62,5	731,0	16 838
1400	56"	75,0	598,0	16 838
1500	60"	25,0	2 344,0	19 217
1500	60"	37,5	1 406,0	19 217
1500	60"	50,0	1 004,0	19 217
1500	60"	62,5	781,0	19 217
1500	60"	75,0	639,0	19 217
1600	64"	25,0	2 493,0	21 752
1600	64"	37,5	1 496,0	21 752
1600	64"	50,0	1 069,0	21 752
1600	64"	62,5	831,0	21 752
1600	64"	75,0	680,0	21 752
1800	72"	25,0	2 793,0	27 294
1800	72"	37,5	1 676,0	27 294
1800	72"	50,0	1 197,0	27 294
1800	72"	62,5	931,0	27 294
1800	72"	75,0	762,0	27 294
2000	80"	25,0	3 091,0	33 433
2000	80"	37,5	1 855,0	33 433
2000	80"	50,0	1 325,0	33 433
2000	80"	62,5	1 030,0	33 433
2000	80"	75,0	843,0	33 433
2200	88"	25,0	3 391,0	40 229
2200	88"	37,5	2 035,0	40 229
2200	88"	50,0	1 453,0	40 229
2200	88"	62,5	1 130,0	40 229
2200	88"	75,0	925,0	40 229
2400	96"	25,0	3 691,0	47 653
2400	96"	37,5	2 214,0	47 653
2400	96"	50,0	1 582,0	47 653
2400	96"	62,5	1 230,0	47 653
2400	96"	75,0	1 007,0	47 653
2600	104"	25,0	4 989,0	55 739
2600	104"	37,5	2 994,0	55 739
2600	104"	50,0	2 138,0	55 739
2600	104"	62,5	1 663,0	55 739
2600	104"	75,0	1 361,0	55 739
2800	112"	25,0	5 364,0	64 422
2800	112"	37,5	3 218,0	64 422
2800	112"	50,0	2 299,0	64 422
2800	112"	62,5	1 788,0	64 422
2800	112"	75,0	1 463,0	64 422
3000	120"	25,0	5 739,0	73 734
3000	120"	37,5	3 443,0	73 734
3000	120"	50,0	2 459,0	73 734
3000	120"	62,5	1 913,0	73 734



### MWA

Stavební délka Overall length	Přibližná hmotnost App. weight
mm	kg
290	110,0
410	160,0
590	230,0
720	280,0
850	330,0
290	120,0
410	170,0
590	245,0
720	300,0
850	355,0
290	125,0
410	180,0
590	260,0
720	320,0
850	380,0
290	140,0
410	205,0
590	290,0
720	360,0
850	425,0
290	175,0
410	245,0
590	355,0
720	435,0
850	510,0
290	190,0
410	270,0
590	390,0
720	475,0
850	565,0
290	210,0
410	295,0
590	425,0
720	520,0
850	615,0
290	245,0
420	355,0
600	505,0
730	625,0
860	740,0
290	265,0
420	385,0
600	545,0
730	670,0
860	795,0
290	285,0
420	410,0
600	585,0
730	720,0

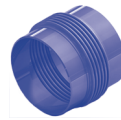


### MFA

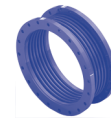
Stavební délka Overall length	Přibližná hmotnost App. weight
mm	kg
220	455,0
300	490,0
380	530,0
460	570,0
540	605,0
220	505,0
300	545,0
390	585,0
470	625,0
550	665,0
230	555,0
310	600,0
390	645,0
470	685,0
550	730,0
230	685,0
310	735,0
390	785,0
470	830,0
550	880,0
240	875,0
320	930,0
400	985,0
480	1 040,0
560	1 095,0
250	1 095,0
330	1 155,0
410	1 215,0
490	1 275,0
570	1 335,0
260	1 270,0
340	1 350,0
420	1 400,0
500	1 465,0
580	1 530,0
260	1 535,0
340	1 615,0
430	1 705,0
510	1 790,0
590	1 870,0
270	1 800,0
350	1 885,0
430	1 980,0
520	2 070,0
600	2 160,0
270	1 970,0
360	2 065,0
440	2 165,0
520	2 265,0

# PN 6

Jmenovitá světllost Nominal diameter	Jmenovitá světllost Nominal diameter	Axiální posuv Axial movement	Axiální tuhost Spring rate	Efektivní průřez Effective area
DN	DN	± mm	N/mm	cm <sup>2</sup>
mm	inch			
3200	128"	25,0	7 335,0	83 664
3200	128"	37,5	4 401,0	83 664
3200	128"	50,0	3 144,0	83 664
3400	136"	25,0	5 683,0	94 504
3400	136"	37,5	3 410,0	94 504
3400	136"	50,0	2 436,0	94 504
3600	144"	25,0	6 011,0	105 715
3600	144"	37,5	3 607,0	105 715
3600	144"	50,0	2 576,0	105 715



**MWA**



**MFA**

Stavební délka Overall length	Přibližná hmotnost App. weight	Stavební délka Overall length	Přibližná hmotnost App. weight
mm	kg	mm	kg
300	355,0	290	2 360,0
420	515,0	370	2 480,0
600	735,0	460	2 605,0
300	390,0	300	2 720,0
420	570,0	380	2 855,0
600	810,0	460	2 995,0
300	415,0	300	3 325,0
420	600,0	390	3 470,0
600	860,0	470	3 615,0