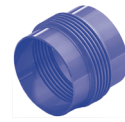
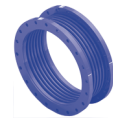


PN 40

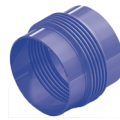
Jmenovitá světllost Nominal diameter	Jmenovitá světllost Nominal diameter	Axialní posuv Axial movement	Axialní tuhost Spring rate	Efektivní průřez Effective area
DN	DN	± mm	N/mm	cm ²
mm	inch			
32	1 ¼"	6,0	92,0	18
32	1 ¼"	12,5	46,0	18
32	1 ¼"	25,0	23,0	18
40	1 ½"	6,0	104,0	22
40	1 ½"	12,5	58,0	22
40	1 ½"	25,0	29,0	22
50	1"	6,0	230,0	37
50	1"	12,5	115,0	37
50	1"	25,0	58,0	37
65	2 ½"	6,0	207,0	54
65	2 ½"	12,5	124,0	54
65	2 ½"	25,0	62,0	54
80	3"	6,0	197,0	78
80	3"	12,5	118,0	78
80	3"	25,0	59,0	78
80	3"	37,5	39,0	78
100	4"	12,5	526,0	125
100	4"	25,0	283,0	125
100	4"	37,5	194,0	125
125	5"	12,5	1 249,0	185
125	5"	25,0	672,0	185
125	5"	37,5	460,0	185
150	6"	12,5	1 671,0	262
150	6"	25,0	900,0	262
150	6"	37,5	616,0	262
200	8"	12,5	1 249,0	437
200	8"	25,0	795,0	437
200	8"	37,5	583,0	437
250	10"	12,5	1 829,0	662
250	10"	25,0	831,0	662
250	10"	37,5	610,0	662
300	12"	12,5	2 123,0	922
300	12"	25,0	965,0	922
300	12"	37,5	708,0	922
350	14"	12,5	1 750,0	1 110
350	14"	25,0	795,0	1 110
350	14"	37,5	583,0	1 110
400	16"	12,5	2 812,0	1 446
400	16"	25,0	2 008,0	1 446
400	16"	37,5	1 562,0	1 446
500	20"	12,5	3 714,0	2 217
500	20"	25,0	2 653,0	2 217
500	20"	37,5	2 064,0	2 217
600	24"	12,5	3 950,0	3 144
600	24"	25,0	2 821,0	3 144
600	24"	37,5	2 194,0	3 144
700	28"	12,5	7 382,0	4 243
700	28"	25,0	5 273,0	4 243
700	28"	37,5	4 101,0	4 243


MWA

MFA

Stavební délka Overall length	Přibližná hmotnost App. weight	Stavební délka Overall length	Přibližná hmotnost App. weight
mm	kg	mm	kg
160	0,6	150	5,0
230	0,8	200	5,0
360	1,4	290	5,0
210	0,9	160	5,0
230	1,0	200	6,0
360	1,5	300	6,0
230	1,4	160	7,0
260	1,6	210	7,0
390	2,5	310	8,0
240	2,3	180	10,0
270	2,6	210	10,0
390	4,0	310	11,0
250	3,0	190	12,0
290	4,0	240	12,0
390	5,0	340	14,0
540	7,0	440	16,0
270	5,0	240	17,0
370	8,0	320	19,0
470	10,0	400	21,0
270	7,0	250	23,0
380	11,0	330	26,0
480	14,0	420	29,0
280	11,0	270	30,0
400	15,0	370	34,0
510	20,0	460	38,0
290	16,0	310	52,0
400	22,0	370	57,0
470	26,0	440	60,0
260	18,0	310	75,0
410	30,0	420	85,0
490	36,0	490	90,0
270	26,0	190	105,0
420	42,0	310	120,0
510	52,0	380	130,0
280	31,0	210	150,0
430	50,0	330	165,0
520	60,0	410	175,0
310	43,0	250	210,0
400	56,0	300	220,0
460	65,0	350	225,0
310	65,0	260	255,0
410	80,0	310	270,0
470	95,0	360	280,0
310	80,0	260	355,0
410	105,0	310	370,0
470	125,0	370	385,0
310	110,0	270	445,0
410	145,0	320	465,0
470	170,0	380	485,0

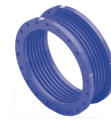
PN 40

Jmenovitá světllost Nominal diameter	Jmenovitá světllost Nominal diameter	Axiální posuv Axial movement	Axiální tuhost Spring rate	Efektivní průřez Effective area
DN mm	DN inch	± mm	N/mm	cm ²
800	32"	12,5	7 572,0	5 510
800	32"	25,0	5 409,0	5 510
800	32"	37,5	4 207,0	5 510
900	36"	12,5	7 678,0	6 943
900	36"	25,0	5 484,0	6 943
900	36"	37,5	4 265,0	6 943
1000	40"	12,5	13 197,0	8 539
1000	40"	25,0	9 426,0	8 539
1000	40"	37,5	7 331,0	8 539
1100	44"	12,5	13 245,0	10 345
1100	44"	25,0	9 460,0	10 345
1100	44"	37,5	7 358,0	10 345
1200	48"	12,5	12 088,0	12 266
1200	48"	25,0	8 634,0	12 266
1200	48"	37,5	6 716,0	12 266



MWA

Stavební délka Overall length	Přibližná hmotnost App. weight
mm	kg
310	130,0
410	170,0
470	195,0
310	145,0
410	190,0
470	225,0
320	205,0
420	265,0
490	310,0
320	230,0
420	300,0
490	345,0
320	255,0
420	330,0
490	385,0



MFA

Stavební délka Overall length	Přibližná hmotnost App. weight
mm	kg
280	630,0
330	655,0
390	675,0
290	780,0
350	805,0
400	830,0
320	985,0
380	1 025,0
430	1 060,0
340	1 340,0
400	1 390,0
450	1 435,0