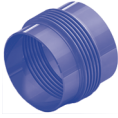

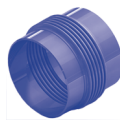


PN 25

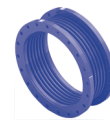
| Jmenovitá světllost Nominal diameter | Jmenovitá světllost Nominal diameter | Axialní posuv Axial movement | Axialní tuhost Spring rate | Efektivní průřez Effective area |  MWA |  MFA | | |
|---|---|---------------------------------|-------------------------------|------------------------------------|--|---|--|---|
| DN mm | DN inch | ± mm | N/mm | cm ² | Stavební délka Overall length mm | Přibližná hmotnost App. weight kg | Stavební délka Overall length mm | Přibližná hmotnost App. weight kg |
| 25 | 1" | 6,0 | 65,0 | 11 | 150 | 0,4 | 140 | 3,0 |
| 25 | 1" | 12,5 | 36,0 | 11 | 200 | 0,5 | 180 | 3,0 |
| 25 | 1" | 25,0 | 18,0 | 11 | 330 | 0,8 | 270 | 3,0 |
| 25 | 1" | 37,5 | 12,0 | 11 | 470 | 1,1 | 360 | 4,0 |
| 32 | 1 ¼" | 6,0 | 61,0 | 18 | 150 | 0,5 | 140 | 5,0 |
| 32 | 1 ¼" | 12,5 | 31,0 | 18 | 220 | 0,7 | 190 | 5,0 |
| 32 | 1 ¼" | 25,0 | 15,0 | 18 | 350 | 1,1 | 280 | 5,0 |
| 32 | 1 ¼" | 37,5 | 10,0 | 18 | 470 | 1,5 | 380 | 5,0 |
| 40 | 1 ½" | 6,0 | 69,0 | 22 | 200 | 0,8 | 150 | 5,0 |
| 40 | 1 ½" | 12,5 | 39,0 | 22 | 220 | 0,8 | 190 | 5,0 |
| 40 | 1 ½" | 25,0 | 19,0 | 22 | 340 | 1,3 | 280 | 6,0 |
| 40 | 1 ½" | 37,5 | 13,0 | 22 | 470 | 1,7 | 370 | 6,0 |
| 50 | 2" | 6,0 | 153,0 | 37 | 220 | 1,2 | 170 | 7,0 |
| 50 | 2" | 12,5 | 76,0 | 37 | 250 | 1,4 | 210 | 7,0 |
| 50 | 2" | 25,0 | 38,0 | 37 | 380 | 2,1 | 310 | 8,0 |
| 50 | 2" | 37,5 | 25,0 | 37 | 490 | 2,6 | 400 | 8,0 |
| 65 | 2 ½" | 6,0 | 103,0 | 53 | 230 | 2,0 | 180 | 9,0 |
| 65 | 2 ½" | 12,5 | 62,0 | 53 | 260 | 2,1 | 210 | 9,0 |
| 65 | 2 ½" | 25,0 | 31,0 | 53 | 380 | 2,9 | 300 | 10,0 |
| 65 | 2 ½" | 37,5 | 21,0 | 53 | 480 | 4,0 | 390 | 11,0 |
| 80 | 3" | 6,0 | 148,0 | 77 | 240 | 2,9 | 190 | 12,0 |
| 80 | 3" | 12,5 | 89,0 | 77 | 280 | 3,0 | 230 | 12,0 |
| 80 | 3" | 25,0 | 44,0 | 77 | 380 | 4,0 | 330 | 13,0 |
| 80 | 3" | 37,5 | 30,0 | 77 | 520 | 6,0 | 430 | 14,0 |
| 100 | 4" | 12,5 | 419,0 | 125 | 260 | 5,0 | 230 | 16,0 |
| 100 | 4" | 25,0 | 226,0 | 125 | 360 | 6,0 | 310 | 17,0 |
| 100 | 4" | 37,5 | 154,0 | 125 | 460 | 8,0 | 390 | 19,0 |
| 100 | 4" | 50,0 | 128,0 | 125 | 530 | 9,0 | 440 | 20,0 |
| 125 | 5" | 12,5 | 996,0 | 184 | 270 | 6,0 | 240 | 22,0 |
| 125 | 5" | 25,0 | 536,0 | 184 | 370 | 9,0 | 320 | 24,0 |
| 125 | 5" | 37,5 | 367,0 | 184 | 470 | 11,0 | 400 | 26,0 |
| 125 | 5" | 50,0 | 303,0 | 184 | 560 | 14,0 | 460 | 28,0 |
| 150 | 6" | 12,5 | 1 332,0 | 261 | 270 | 9,0 | 260 | 28,0 |
| 150 | 6" | 25,0 | 717,0 | 261 | 380 | 13,0 | 350 | 32,0 |
| 150 | 6" | 37,5 | 491,0 | 261 | 490 | 17,0 | 440 | 35,0 |
| 150 | 6" | 50,0 | 405,0 | 261 | 590 | 20,0 | 500 | 37,0 |
| 200 | 8" | 12,5 | 996,0 | 435 | 280 | 14,0 | 280 | 40,0 |
| 200 | 8" | 25,0 | 634,0 | 435 | 380 | 19,0 | 340 | 44,0 |
| 200 | 8" | 37,5 | 465,0 | 435 | 460 | 22,0 | 410 | 47,0 |
| 200 | 8" | 50,0 | 367,0 | 435 | 570 | 28,0 | 470 | 50,0 |
| 200 | 8" | 62,5 | 303,0 | 435 | 690 | 34,0 | 530 | 54,0 |
| 250 | 10" | 12,5 | 1 460,0 | 660 | 250 | 16,0 | 270 | 54,0 |
| 250 | 10" | 25,0 | 664,0 | 660 | 400 | 25,0 | 370 | 60,0 |
| 250 | 10" | 37,5 | 487,0 | 660 | 470 | 30,0 | 440 | 65,0 |
| 250 | 10" | 50,0 | 384,0 | 660 | 590 | 38,0 | 510 | 70,0 |
| 300 | 12" | 12,5 | 1 475,0 | 916 | 260 | 20,0 | 170 | 70,0 |
| 300 | 12" | 25,0 | 671,0 | 916 | 410 | 31,0 | 270 | 80,0 |
| 300 | 12" | 37,5 | 492,0 | 916 | 490 | 37,0 | 350 | 85,0 |
| 300 | 12" | 50,0 | 388,0 | 916 | 610 | 47,0 | 420 | 90,0 |
| 350 | 14" | 12,5 | 1 218,0 | 1 106 | 260 | 23,0 | 180 | 105,0 |
| 350 | 14" | 25,0 | 554,0 | 1 106 | 420 | 36,0 | 290 | 115,0 |
| 350 | 14" | 37,5 | 406,0 | 1 106 | 500 | 43,0 | 370 | 120,0 |
| 350 | 14" | 50,0 | 321,0 | 1 106 | 630 | 54,0 | 440 | 130,0 |

PN 25

| Jmenovitá světllost Nominal diameter | Jmenovitá světllost Nominal diameter | Axiální posuv Axial movement | Axiální tuhost Spring rate | Efektivní průřez Effective area | Stavební délka Overall length | Přibližná hmotnost App. weight | Stavební délka Overall length | Přibližná hmotnost App. weight |
|---|---|---------------------------------|-------------------------------|------------------------------------|----------------------------------|-----------------------------------|----------------------------------|-----------------------------------|
| DN | DN | ± mm | N/mm | cm ² | mm | kg | mm | kg |
| 400 | 16" | 12,5 | 2 254,0 | 1 451 | 300 | 33,0 | 220 | 140,0 |
| 400 | 16" | 25,0 | 1 610,0 | 1 451 | 390 | 43,0 | 270 | 145,0 |
| 400 | 16" | 37,5 | 1 252,0 | 1 451 | 450 | 50,0 | 320 | 150,0 |
| 400 | 16" | 50,0 | 867,0 | 1 451 | 600 | 65,0 | 420 | 165,0 |
| 500 | 20" | 12,5 | 2 482,0 | 2 227 | 300 | 42,0 | 230 | 190,0 |
| 500 | 20" | 25,0 | 1 773,0 | 2 227 | 390 | 55,0 | 280 | 200,0 |
| 500 | 20" | 37,5 | 1 379,0 | 2 227 | 450 | 65,0 | 330 | 205,0 |
| 500 | 20" | 50,0 | 954,0 | 2 227 | 600 | 85,0 | 430 | 220,0 |
| 600 | 24" | 12,5 | 2 643,0 | 3 167 | 300 | 51,0 | 240 | 265,0 |
| 600 | 24" | 25,0 | 1 888,0 | 3 167 | 390 | 65,0 | 290 | 275,0 |
| 600 | 24" | 37,5 | 1 468,0 | 3 167 | 450 | 80,0 | 340 | 285,0 |
| 600 | 24" | 50,0 | 1 017,0 | 3 167 | 600 | 105,0 | 440 | 305,0 |
| 700 | 28" | 12,5 | 4 131,0 | 4 278 | 310 | 80,0 | 250 | 345,0 |
| 700 | 28" | 25,0 | 2 951,0 | 4 278 | 400 | 105,0 | 300 | 360,0 |
| 700 | 28" | 37,5 | 2 295,0 | 4 278 | 460 | 120,0 | 360 | 375,0 |
| 700 | 28" | 50,0 | 1 589,0 | 4 278 | 620 | 165,0 | 470 | 410,0 |
| 800 | 32" | 12,5 | 4 235,0 | 5 550 | 310 | 90,0 | 260 | 455,0 |
| 800 | 32" | 25,0 | 3 025,0 | 5 550 | 400 | 120,0 | 310 | 470,0 |
| 800 | 32" | 37,5 | 2 353,0 | 5 550 | 460 | 140,0 | 370 | 490,0 |
| 800 | 32" | 50,0 | 1 629,0 | 5 550 | 620 | 190,0 | 470 | 530,0 |
| 900 | 36" | 12,5 | 4 286,0 | 6 965 | 310 | 115,0 | 270 | 550,0 |
| 900 | 36" | 25,0 | 3 061,0 | 6 965 | 400 | 150,0 | 320 | 570,0 |
| 900 | 36" | 37,5 | 2 381,0 | 6 965 | 460 | 175,0 | 380 | 590,0 |
| 900 | 36" | 50,0 | 1 648,0 | 6 965 | 620 | 235,0 | 490 | 635,0 |
| 1000 | 40" | 12,5 | 4 575,0 | 8 587 | 310 | 145,0 | 290 | 750,0 |
| 1000 | 40" | 25,0 | 3 268,0 | 8 587 | 410 | 190,0 | 340 | 775,0 |
| 1000 | 40" | 37,5 | 2 541,0 | 8 587 | 470 | 225,0 | 400 | 805,0 |
| 1000 | 40" | 50,0 | 1 759,0 | 8 587 | 630 | 300,0 | 510 | 865,0 |
| 1100 | 44" | 12,5 | 4 590,0 | 10 398 | 310 | 160,0 | | |
| 1100 | 44" | 25,0 | 3 279,0 | 10 398 | 410 | 210,0 | | |
| 1100 | 44" | 37,5 | 2 550,0 | 10 398 | 470 | 250,0 | | |
| 1100 | 44" | 50,0 | 1 765,0 | 10 398 | 630 | 335,0 | | |
| 1200 | 48" | 12,5 | 4 182,0 | 12 284 | 310 | 200,0 | 300 | 1 000,0 |
| 1200 | 48" | 25,0 | 2 987,0 | 12 284 | 410 | 260,0 | 360 | 1 035,0 |
| 1200 | 48" | 37,5 | 2 323,0 | 12 284 | 470 | 305,0 | 410 | 1 070,0 |
| 1200 | 48" | 50,0 | 1 608,0 | 12 284 | 630 | 405,0 | 520 | 1 145,0 |
| 1300 | 52" | 25,0 | 10 333,0 | 14 574 | 300 | 230,0 | | |
| 1300 | 52" | 37,5 | 6 200,0 | 14 574 | 430 | 335,0 | | |
| 1300 | 52" | 50,0 | 4 428,0 | 14 574 | 620 | 475,0 | | |
| 1400 | 56" | 25,0 | 11 072,0 | 16 735 | 300 | 275,0 | 310 | 1 400,0 |
| 1400 | 56" | 37,5 | 6 643,0 | 16 735 | 430 | 395,0 | 400 | 1 480,0 |
| 1400 | 56" | 50,0 | 4 745,0 | 16 735 | 620 | 560,0 | 490 | 1 565,0 |
| 1500 | 60" | 25,0 | 11 831,0 | 19 106 | 300 | 295,0 | | |
| 1500 | 60" | 37,5 | 7 098,0 | 19 106 | 430 | 420,0 | | |
| 1500 | 60" | 50,0 | 5 070,0 | 19 106 | 620 | 605,0 | | |
| 1600 | 64" | 25,0 | 12 570,0 | 21 569 | 300 | 350,0 | 330 | 1 850,0 |
| 1600 | 64" | 37,5 | 7 542,0 | 21 569 | 430 | 490,0 | 420 | 1 940,0 |
| 1600 | 64" | 50,0 | 5 387,0 | 21 569 | 620 | 700,0 | 510 | 2 035,0 |
| 1800 | 72" | 25,0 | 14 087,0 | 27 090 | 300 | 390,0 | 350 | 2 275,0 |
| 1800 | 72" | 37,5 | 8 452,0 | 27 090 | 430 | 550,0 | 440 | 2 380,0 |
| 1800 | 72" | 50,0 | 6 037,0 | 27 090 | 620 | 790,0 | 530 | 2 485,0 |
| 1800 | 72" | 75,0 | 3 842,0 | 27 090 | 890 | 1 130,0 | 700 | 2 690,0 |
| 2000 | 80" | 25,0 | 15 604,0 | 33 239 | 300 | 435,0 | 360 | 2 930,0 |
| 2000 | 80" | 37,5 | 9 363,0 | 33 239 | 430 | 610,0 | 450 | 3 045,0 |
| 2000 | 80" | 50,0 | 6 688,0 | 33 239 | 620 | 875,0 | 540 | 3 165,0 |



MWA



MFA