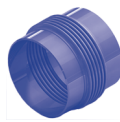
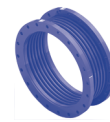


PN 16

Jmenovitá světllost Nominal diameter	Jmenovitá světllost Nominal diameter	Axiální posuv Axial movement	Axiální tuhost Spring rate	Efektivní průřez Effective area	Stavební délka Overall length	Přibližná hmotnost App. weight	Stavební délka Overall length	Přibližná hmotnost App. weight
DN	DN	± mm	N/mm	cm ²	mm	kg	mm	kg
mm	inch							
25	1"	6,0	65,0	11	150	0,4	140	2,7
25	1"	12,5	36,0	11	200	0,5	180	2,8
25	1"	25,0	18,0	11	330	0,8	270	3,0
25	1"	37,5	12,0	11	470	1,1	360	3,0
32	1 ¼"	6,0	61,0	18	150	0,5	140	4,0
32	1 ¼"	12,5	31,0	18	220	0,7	180	4,0
32	1 ¼"	25,0	15,0	18	350	1,1	280	5,0
32	1 ¼"	37,5	10,0	18	470	1,5	370	5,0
40	1 ½"	6,0	69,0	22	200	0,8	150	5,0
40	1 ½"	12,5	39,0	22	220	0,8	190	5,0
40	1 ½"	25,0	19,0	22	340	1,3	280	5,0
40	1 ½"	37,5	13,0	22	470	1,7	370	5,0
50	2"	6,0	153,0	37	220	1,2	160	6,0
50	2"	12,5	76,0	37	250	1,4	210	6,0
50	2"	25,0	38,0	37	380	2,1	300	7,0
50	2"	37,5	25,0	37	490	2,6	390	7,0
65	2 ½"	6,0	103,0	53	230	2,0	160	8,0
65	2 ½"	12,5	62,0	53	260	2,1	200	8,0
65	2 ½"	25,0	31,0	53	380	2,9	290	8,0
65	2 ½"	37,5	21,0	53	480	4,0	370	9,0
80	3"	6,0	98,0	77	240	2,7	170	10,0
80	3"	12,5	59,0	77	280	3,0	210	10,0
80	3"	25,0	29,0	77	370	4,0	300	11,0
80	3"	37,5	20,0	77	510	5,0	400	12,0
100	4"	12,5	313,0	124	260	4,0	200	11,0
100	4"	25,0	169,0	124	360	6,0	280	13,0
100	4"	37,5	115,0	124	450	7,0	360	14,0
100	4"	50,0	95,0	124	520	8,0	410	15,0
125	5"	12,5	744,0	183	260	6,0	210	15,0
125	5"	25,0	401,0	183	360	8,0	290	17,0
125	5"	37,5	274,0	183	460	10,0	370	19,0
125	5"	50,0	227,0	183	550	12,0	420	20,0
150	6"	12,5	996,0	259	270	8,0	220	20,0
150	6"	25,0	536,0	259	380	11,0	310	22,0
150	6"	37,5	367,0	259	480	15,0	390	25,0
150	6"	50,0	303,0	259	580	17,0	450	27,0
200	8"	12,5	745,0	433	280	12,0	240	28,0
200	8"	25,0	474,0	433	380	17,0	300	30,0
200	8"	37,5	348,0	433	450	20,0	360	33,0
200	8"	50,0	275,0	433	560	25,0	420	36,0
200	8"	62,5	227,0	433	680	30,0	480	38,0
250	10"	12,5	1 093,0	657	250	15,0	230	38,0
250	10"	25,0	497,0	657	390	23,0	330	43,0
250	10"	37,5	364,0	657	460	27,0	390	46,0
250	10"	50,0	288,0	657	580	33,0	460	50,0
250	10"	62,5	260,0	657	670	39,0	490	52,0
300	12"	12,5	1 105,0	913	260	19,0	250	48,0
300	12"	25,0	502,0	913	400	28,0	360	54,0
300	12"	37,5	368,0	913	480	33,0	420	59,0
300	12"	50,0	291,0	913	600	41,0	490	65,0
300	12"	62,5	263,0	913	690	48,0	530	65,0



MWA



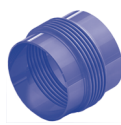
MFA

PN 16

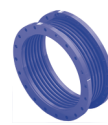
Jmenovitá svátlost Nominal diameter		Axiální posuv Axial movement	Axiální tuhost Spring rate	Efektivní průřez Effective area	MWA		MFA	
DN	DN				Stavební délka Overall length	Přibližná hmotnost App. weight	Stavební délka Overall length	Přibližná hmotnost App. weight
mm	inch	± mm	N/mm	cm ²	mm	kg	mm	kg
350	14"	12,5	912,0	1 102	260	21,0	160	65,0
350	14"	25,0	415,0	1 102	410	32,0	270	75,0
350	14"	37,5	304,0	1 102	490	38,0	340	80,0
350	14"	50,0	240,0	1 102	620	47,0	420	85,0
350	14"	62,5	217,0	1 102	710	55,0	450	90,0
400	16"	12,5	1 687,0	1 446	290	30,0	200	90,0
400	16"	25,0	1 205,0	1 446	380	39,0	250	95,0
400	16"	37,5	937,0	1 446	440	44,0	300	100,0
400	16"	50,0	649,0	1 446	590	59,0	390	110,0
400	16"	62,5	562,0	1 446	700	70,0	440	115,0
500	20"	12,5	1 858,0	2 220	290	38,0	210	150,0
500	20"	25,0	1 327,0	2 220	380	49,0	260	160,0
500	20"	37,5	1 032,0	2 220	440	56,0	310	165,0
500	20"	50,0	715,0	2 220	590	75,0	410	175,0
500	20"	62,5	619,0	2 220	700	90,0	460	185,0
600	24"	12,5	1 980,0	3 159	290	46,0	220	215,0
600	24"	25,0	1 414,0	3 159	380	60,0	270	225,0
600	24"	37,5	1 100,0	3 159	440	70,0	320	235,0
600	24"	50,0	761,0	3 159	590	90,0	410	250,0
600	24"	62,5	660,0	3 159	700	110,0	460	255,0
700	28"	12,5	2 752,0	4 271	300	60,0	230	230,0
700	28"	25,0	1 966,0	4 271	390	80,0	280	240,0
700	28"	37,5	1 529,0	4 271	450	95,0	330	255,0
700	28"	50,0	1 058,0	4 271	600	125,0	430	275,0
700	28"	62,5	917,0	4 271	710	150,0	480	290,0
800	32"	12,5	2 821,0	5 542	300	70,0	240	310,0
800	32"	25,0	2 015,0	5 542	390	95,0	290	320,0
800	32"	37,5	1 567,0	5 542	450	110,0	340	335,0
800	32"	50,0	1 085,0	5 542	600	145,0	440	365,0
800	32"	62,5	940,0	5 542	710	170,0	490	375,0
900	36"	12,5	2 860,0	6 978	300	80,0	250	365,0
900	36"	25,0	2 043,0	6 978	390	105,0	300	380,0
900	36"	37,5	1 589,0	6 978	450	125,0	350	395,0
900	36"	50,0	1 100,0	6 978	600	165,0	450	430,0
900	36"	62,5	953,0	6 978	710	195,0	500	445,0
1000	40"	12,5	3 269,0	8 593	300	110,0	260	510,0
1000	40"	25,0	2 335,0	8 593	390	145,0	310	535,0
1000	40"	37,5	1 816,0	8 593	460	170,0	370	555,0
1000	40"	50,0	1 257,0	8 593	610	225,0	470	600,0
1000	40"	62,5	1 090,0	8 593	720	265,0	520	620,0
1100	44"	12,5	3 280,0	10 405	300	120,0	250	620,0
1100	44"	25,0	2 343,0	10 405	390	160,0	300	645,0
1100	44"	37,5	1 822,0	10 405	460	185,0	350	670,0
1100	44"	50,0	1 261,0	10 405	610	255,0	460	715,0
1100	44"	62,5	1 093,0	10 405	720	300,0	510	740,0
1200	48"	12,5	2 989,0	12 301	300	150,0	280	750,0
1200	48"	25,0	2 135,0	12 301	390	195,0	330	780,0
1200	48"	37,5	1 661,0	12 301	460	230,0	380	805,0
1200	48"	50,0	1 150,0	12 301	610	305,0	490	860,0
1200	48"	87,5	996,0	12 301	720	360,0	540	890,0
1300	52"	25,0	3 062,0	14 576	300	165,0	250	835,0
1300	52"	37,5	1 837,0	14 576	420	240,0	330	885,0
1300	52"	50,0	1 312,0	14 576	600	340,0	420	940,0
1300	52"	62,5	1 021,0	14 576	740	415,0	500	990,0

PN 16

Imenovitá světlost Nominal diameter	Imenovitá světlost Nominal diameter	Axiální posuv Axial movement	Axiální tuhost Spring rate	Efektivní průřez Effective area
DN	DN	± mm	N/mm	cm ²
mm	inch			
1400	56"	25,0	3 808,0	16 787
1400	56"	37,5	2 285,0	16 787
1400	56"	50,0	1 632,0	16 787
1400	56"	62,5	1 269,0	16 787
1500	60"	25,0	4 068,0	19 162
1500	60"	37,5	2 441,0	19 162
1500	60"	50,0	1 744,0	19 162
1500	60"	60,0	1 356,0	19 162
1600	64"	25,0	6 080,0	21 695
1600	64"	37,5	3 648,0	21 695
1600	64"	50,0	2 606,0	21 695
1600	64"	62,5	2 027,0	21 695
1800	72"	25,0	6 804,0	27 172
1800	72"	37,5	4 082,0	27 172
1800	72"	50,0	2 916,0	27 172
1800	72"	62,5	2 268,0	27 172
2000	80"	25,0	13 028,0	33 362
2000	80"	37,5	7 817,0	33 362
2000	80"	50,0	5 583,0	33 362
2000	80"	62,5	4 343,0	33 362



MWA



MFA

Stavební délka Overall length	Přibližná hmotnost App. weight	Stavební délka Overall length	Přibližná hmotnost App. weight
mm	kg	mm	kg
290	190,0	280	940,0
420	265,0	360	995,0
600	380,0	450	1 055,0
730	470,0	530	1 110,0
290	200,0	260	1 120,0
420	285,0	340	1 180,0
600	410,0	420	1 245,0
730	500,0	510	1 305,0
300	215,0	300	1 360,0
420	305,0	380	1 425,0
600	440,0	470	1 490,0
740	535,0	550	1 555,0
300	270,0	310	1 615,0
420	380,0	400	1 690,0
600	545,0	480	1 765,0
740	665,0	560	1 835,0
300	320,0	330	2 005,0
420	455,0	410	2 100,0
610	655,0	500	2 195,0
750	800,0	580	2 290,0