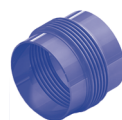


PN 10

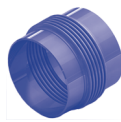
Jmenovitá světllost Nominal diameter	Jmenovitá světllost Nominal diameter	Axiální posuv Axial movement	Axiální tuhost Spring rate	Efektivní průřez Effective area	Stavební délka Overall length	Přibližná hmotnost App. weight	Stavební délka Overall length	Přibližná hmotnost App. weight
DN	DN	± mm	N/mm	cm ²	mm	kg	mm	kg
mm	inch							
25	1"	6,0	65,0	11	150	0,3	140	2,7
25	1"	12,5	36,0	11	200	0,4	180	2,8
25	1"	25,0	18,0	11	330	0,7	270	3,0
25	1"	37,5	12,0	11	470	1,0	360	3,0
32	1 1/4"	6,0	61,0	18	150	0,5	140	4,0
32	1 1/4"	12,5	31,0	18	220	0,7	180	4,0
32	1 1/4"	25,0	15,0	18	350	1,0	280	4,0
32	1 1/4"	37,5	10,0	18	470	1,3	370	5,0
40	1 1/2"	6,0	69,0	22	200	0,8	150	5,0
40	1 1/2"	12,5	39,0	22	220	0,8	190	5,0
40	1 1/2"	25,0	19,0	22	340	1,1	280	5,0
40	1 1/2"	37,5	13,0	22	470	1,6	370	5,0
50	2"	6,0	153,0	37	220	1,2	150	6,0
50	2"	12,5	76,0	37	250	1,3	200	6,0
50	2"	25,0	38,0	37	380	1,9	290	7,0
50	2"	37,5	25,0	37	490	2,4	380	7,0
65	2 1/2"	6,0	103,0	53	230	1,9	150	8,0
65	2 1/2"	12,5	62,0	53	260	2,0	190	8,0
65	2 1/2"	25,0	31,0	53	380	2,7	280	8,0
65	2 1/2"	37,5	21,0	53	480	3,0	360	9,0
80	3"	6,0	98,0	77	240	2,6	170	9,0
80	3"	12,5	59,0	77	280	2,9	210	10,0
80	3"	25,0	29,0	77	370	4,0	300	10,0
80	3"	37,5	20,0	77	510	5,0	400	11,0
100	4"	12,5	208,0	123	260	4,0	200	11,0
100	4"	25,0	112,0	123	350	5,0	280	12,0
100	4"	37,5	77,0	123	450	6,0	350	13,0
100	4"	50,0	63,0	123	520	7,0	400	13,0
125	5"	12,5	495,0	182	260	5,0	210	15,0
125	5"	25,0	266,0	182	350	7,0	280	16,0
125	5"	37,5	182,0	182	450	8,0	360	17,0
125	5"	50,0	151,0	182	540	10,0	410	18,0
150	6"	12,5	662,0	257	270	7,0	220	18,0
150	6"	25,0	356,0	257	370	9,0	300	20,0
150	6"	37,5	244,0	257	470	12,0	380	22,0
150	6"	50,0	201,0	257	560	14,0	430	23,0
200	8"	12,5	496,0	431	270	11,0	240	26,0
200	8"	25,0	315,0	431	370	14,0	300	28,0
200	8"	37,5	231,0	431	440	16,0	350	30,0
200	8"	50,0	183,0	431	550	20,0	410	31,0
200	8"	62,5	151,0	431	670	25,0	470	33,0
250	10"	12,5	727,0	654	250	13,0	220	33,0
250	10"	25,0	330,0	654	380	19,0	320	36,0
250	10"	37,5	242,0	654	450	22,0	380	39,0
250	10"	50,0	191,0	654	570	28,0	440	41,0
250	10"	62,5	173,0	654	660	33,0	470	42,0
300	12"	12,5	735,0	910	250	17,0	230	38,0
300	12"	25,0	334,0	910	390	24,0	330	42,0
300	12"	37,5	245,0	910	470	28,0	400	45,0
300	12"	50,0	193,0	910	590	34,0	460	48,0
300	12"	62,5	175,0	910	680	41,0	500	50,0


MWA

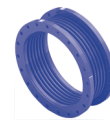
MFA

PN 10

Jmenovitá světllost Nominal diameter	Jmenovitá světllost Nominal diameter	Axiální posuv Axial movement	Axiální tuhost Spring rate	Efektivní průřez Effective area	Stavební délka Overall length	Přibližná hmotnost App. weight	Stavební délka Overall length	Přibližná hmotnost App. weight
DN	DN	± mm	N/mm	cm ²	mm	kg	mm	kg
mm	inch							
350	14"	12,5	607,0	1 099	260	19,0	150	55,0
350	14"	25,0	276,0	1 099	400	27,0	260	60,0
350	14"	37,5	202,0	1 099	480	31,0	330	65,0
350	14"	50,0	160,0	1 099	600	39,0	400	70,0
350	14"	62,5	145,0	1 099	700	46,0	440	70,0
400	16"	12,5	1 123,0	1 440	290	25,0	190	80,0
400	16"	25,0	802,0	1 440	380	32,0	240	80,0
400	16"	37,5	624,0	1 440	430	36,0	290	85,0
400	16"	50,0	432,0	1 440	580	48,0	380	90,0
400	16"	62,5	374,0	1 440	690	57,0	430	95,0
500	20"	12,5	1 237,0	2 213	290	31,0	210	110,0
500	20"	25,0	884,0	2 213	380	40,0	250	115,0
500	20"	37,5	687,0	2 213	430	46,0	300	120,0
500	20"	50,0	476,0	2 213	580	60,0	400	130,0
500	20"	62,5	412,0	2 213	690	70,0	440	135,0
600	24"	12,5	1 318,0	3 151	290	38,0	210	145,0
600	24"	25,0	942,0	3 151	380	49,0	260	150,0
600	24"	37,5	732,0	3 151	430	55,0	300	155,0
600	24"	50,0	507,0	3 151	580	75,0	400	165,0
600	24"	62,5	439,0	3 151	690	85,0	450	175,0
700	28"	12,5	2 062,0	4 261	290	52,0	210	185,0
700	28"	25,0	1 473,0	4 261	380	70,0	260	195,0
700	28"	37,5	1 145,0	4 261	440	80,0	310	205,0
700	28"	50,0	793,0	4 261	590	105,0	410	220,0
700	28"	62,5	687,0	4 261	700	125,0	460	230,0
800	32"	12,5	2 114,0	5 531	290	60,0	220	255,0
800	32"	25,0	1 510,0	5 531	380	80,0	270	265,0
800	32"	37,5	1 174,0	5 531	440	90,0	320	275,0
800	32"	50,0	813,0	5 531	590	120,0	420	290,0
800	32"	62,5	705,0	5 531	700	145,0	470	305,0
900	36"	12,5	2 143,0	6 966	290	70,0	230	300,0
900	36"	25,0	1 531,0	6 966	380	90,0	280	315,0
900	36"	37,5	1 191,0	6 966	440	105,0	330	325,0
900	36"	50,0	824,0	6 966	590	135,0	430	350,0
900	36"	62,5	714,0	6 966	700	160,0	480	360,0
1000	40"	12,5	2 616,0	8 596	300	85,0	240	380,0
1000	40"	25,0	1 868,0	8 596	390	115,0	290	395,0
1000	40"	37,5	1 453,0	8 596	450	135,0	340	415,0
1000	40"	50,0	1 006,0	8 596	600	180,0	440	445,0
1000	40"	62,5	872,0	8 596	710	210,0	490	465,0
1100	44"	12,5	2 622,0	10 391	300	105,0	240	450,0
1100	44"	25,0	1 873,0	10 391	390	140,0	290	470,0
1100	44"	37,5	1 457,0	10 391	450	160,0	340	490,0
1100	44"	50,0	1 008,0	10 391	600	215,0	440	525,0
1100	44"	62,5	874,0	10 391	710	255,0	500	545,0
1200	48"	12,5	2 393,0	12 315	300	120,0	250	530,0
1200	48"	25,0	1 709,0	12 315	390	155,0	300	550,0
1200	48"	37,5	1 329,0	12 315	450	180,0	350	570,0
1200	48"	50,0	920,0	12 315	600	240,0	450	615,0
1200	48"	62,5	798,0	12 315	710	285,0	500	635,0
1300	52"	25,0	2 041,0	14 574	290	125,0	240	610,0
1300	52"	37,5	1 225,0	14 574	410	175,0	320	640,0
1300	52"	50,0	875,0	14 574	590	250,0	410	680,0
1300	52"	62,5	680,0	14 574	720	305,0	490	715,0
1300	52"	75,0	557,0	14 574	850	360,0	570	750,0



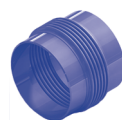
MWA



MFA

PN 10

Jmenovitá světllost Nominal diameter	Jmenovitá světllost Nominal diameter	Axiální posuv Axial movement	Axiální tuhost Spring rate	Efektivní průřez Effective area
DN	DN	± mm	N/mm	cm ²
mm	inch			
1400	56"	25,0	2 191,0	16 792
1400	56"	37,5	1 314,0	16 792
1400	56"	50,0	939,0	16 792
1400	56"	62,5	730,0	16 792
1400	56"	75,0	597,0	16 792
1500	60"	25,0	2 927,0	19 187
1500	60"	37,5	1 756,0	19 187
1500	60"	50,0	1 255,0	19 187
1500	60"	62,5	976,0	19 187
1500	60"	75,0	798,0	19 187
1600	64"	25,0	3 115,0	21 721
1600	64"	37,5	1 869,0	21 721
1600	64"	50,0	1 335,0	21 721
1600	64"	62,5	1 038,0	21 721
1600	64"	75,0	849,0	21 721
1800	72"	25,0	3 485,0	27 201
1800	72"	37,5	2 091,0	27 201
1800	72"	50,0	1 494,0	27 201
1800	72"	62,5	1 162,0	27 201
1800	72"	75,0	760,0	27 177
2000	80"	25,0	3 860,0	33 362
2000	80"	37,5	2 316,0	33 362
2000	80"	50,0	1 654,0	33 362
2000	80"	62,5	1 287,0	33 362
2000	80"	75,0	1 053,0	33 362
2200	88"	25,0	5 083,0	40 179
2200	88"	37,5	3 050,0	40 179
2200	88"	50,0	2 179,0	40 179
2200	88"	62,5	1 694,0	40 179
2200	88"	75,0	1 386,0	40 179
2400	96"	25,0	5 533,0	47 599
2400	96"	37,5	3 320,0	47 599
2400	96"	50,0	2 371,0	47 599
2400	96"	62,5	1 844,0	47 599
2400	96"	75,0	1 509,0	47 599
2600	104"	25,0	9 738,0	55 655
2600	104"	37,5	5 843,0	55 655
2600	104"	50,0	4 173,0	55 655
2600	104"	62,5	3 246,0	55 655
2600	104"	75,0	2 656,0	55 655
2800	112"	25,0	10 469,0	64 332
2800	112"	37,5	6 281,0	64 332
2800	112"	50,0	4 487,0	64 332
2800	112"	62,5	3 490,0	64 332
2800	112"	75,0	2 855,0	64 332
3000	120"	25,0	19 361,0	73 686
3000	120"	37,5	11 617,0	73 686
3000	120"	50,0	8 298,0	73 686
3000	120"	62,5	6 454,0	73 686



MWA



MFA

Stavební délka Overall length	Přibližná hmotnost App. weight	Stavební délka Overall length	Přibližná hmotnost App. weight
mm	kg	mm	kg
290	135,0	250	720,0
410	185,0	330	755,0
590	270,0	410	795,0
720	330,0	490	835,0
850	385,0	570	870,0
290	155,0	260	865,0
420	220,0	340	910,0
600	315,0	420	960,0
730	390,0	510	1 010,0
860	460,0	590	1 060,0
290	165,0	260	1 010,0
420	235,0	340	1 060,0
600	335,0	430	1 115,0
730	415,0	510	1 165,0
860	490,0	590	1 215,0
290	215,0	270	1 220,0
420	300,0	360	1 280,0
600	435,0	440	1 340,0
730	530,0	520	1 395,0
850	570,0	590	1 400,0
290	240,0	290	1 500,0
420	335,0	370	1 565,0
600	480,0	450	1 630,0
730	585,0	530	1 695,0
860	690,0	620	1 760,0
300	280,0	300	1 925,0
420	400,0	380	2 005,0
600	570,0	470	2 090,0
740	695,0	550	2 170,0
870	820,0	640	2 250,0
300	305,0	310	2 295,0
420	435,0	400	2 385,0
600	620,0	480	2 475,0
740	760,0	560	2 565,0
870	895,0	650	2 650,0
300	335,0	320	2 635,0
420	480,0	410	2 735,0
600	685,0	490	2 835,0
740	835,0	580	2 935,0
870	990,0	660	3 035,0
300	360,0	340	3 170,0
420	515,0	420	3 275,0
600	740,0	500	3 385,0
740	900,0	590	3 490,0
870	1 065,0	670	3 600,0
300	420,0	350	3 850,0
420	600,0	440	3 985,0
610	860,0	520	4 120,0
750	1 055,0	610	4 255,0