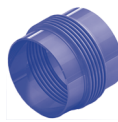


PN 1

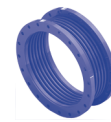
Jmenovitá svátlost Nominal diameter		Axiální posuv Axial movement	Axiální tuhost Spring rate		Efektivní průřez Effective area	MWA		MFA	
DN	DN		± mm	N/mm		cm ²	Stavební délka Overall length	Přibližná hmotnost App. weight	Stavební délka Overall length
mm	inch				mm	kg	mm	kg	
25	1"	6,0	32,0	11	150	0,3	90	1,9	
25	1"	12,5	18,0	11	200	0,4	120	1,9	
25	1"	25,0	9,0	11	320	0,6	210	2,0	
25	1"	37,5	6,0	11	460	0,8	300	2,2	
32	1 ¼"	6,0	31,0	17	150	0,4	90	2,9	
32	1 ¼"	12,5	15,0	17	210	0,6	130	3,0	
32	1 ¼"	25,0	8,0	17	340	1,0	220	3,0	
32	1 ¼"	37,5	5,0	17	460	1,2	310	3,0	
40	1 ½"	6,0	34,0	22	200	0,8	90	3,0	
40	1 ½"	12,5	19,0	22	220	0,8	130	3,0	
40	1 ½"	25,0	10,0	22	340	1,1	220	4,0	
40	1 ½"	37,5	6,0	22	460	1,5	310	4,0	
50	2"	6,0	76,0	36	220	1,2	90	4,0	
50	2"	12,5	38,0	36	250	1,2	130	4,0	
50	2"	25,0	19,0	36	370	1,7	220	4,0	
50	2"	37,5	13,0	36	480	2,2	320	5,0	
65	2 ½"	6,0	51,0	53	230	1,8	90	5,0	
65	2 ½"	12,5	31,0	53	260	1,9	130	5,0	
65	2 ½"	25,0	15,0	53	370	2,5	210	5,0	
65	2 ½"	37,5	10,0	53	480	3,0	300	6,0	
80	3"	6,0	49,0	76	240	2,4	100	7,0	
80	3"	12,5	29,0	76	280	2,7	140	8,0	
80	3"	25,0	15,0	76	370	3,0	230	8,0	
80	3"	37,5	10,0	76	500	4,0	330	9,0	
100	4"	12,5	104,0	122	250	3,0	130	9,0	
100	4"	25,0	56,0	122	350	4,0	200	9,0	
100	4"	37,5	38,0	122	440	5,0	270	10,0	
100	4"	50,0	32,0	122	510	6,0	320	10,0	
125	5"	12,5	126,0	180	250	4,0	130	11,0	
125	5"	25,0	68,0	180	350	6,0	210	12,0	
125	5"	37,5	46,0	180	440	7,0	280	13,0	
125	5"	50,0	38,0	180	530	8,0	330	13,0	
150	6"	12,5	191,0	256	260	6,0	140	13,0	
150	6"	25,0	103,0	256	360	7,0	220	14,0	
150	6"	37,5	70,0	256	460	9,0	300	15,0	
150	6"	50,0	58,0	256	550	10,0	350	16,0	
200	8"	12,5	144,0	432	270	8,0	150	19,0	
200	8"	25,0	91,0	432	360	10,0	210	20,0	
200	8"	37,5	67,0	432	430	11,0	260	21,0	
200	8"	50,0	53,0	432	540	14,0	320	22,0	
200	8"	62,5	44,0	432	650	17,0	380	23,0	
250	10"	12,5	211,0	658	250	9,0	130	24,0	
250	10"	25,0	96,0	658	380	13,0	220	26,0	
250	10"	37,5	70,0	658	450	14,0	280	28,0	
250	10"	50,0	56,0	658	560	18,0	340	29,0	
250	10"	62,5	50,0	658	650	21,0	370	30,0	
300	12"	12,5	213,0	915	250	11,0	140	32,0	
300	12"	25,0	97,0	915	390	15,0	230	35,0	
300	12"	37,5	71,0	915	460	18,0	300	36,0	
300	12"	50,0	56,0	915	570	22,0	360	38,0	
300	12"	62,5	51,0	915	670	26,0	390	39,0	

PN 1

Jmenovitá světllost Nominal diameter	Jmenovitá světllost Nominal diameter	Axialní posuv Axial movement	Axialní tuhost Spring rate	Efektivní průřez Effective area	Stavební délka Overall length	Přibližná hmotnost App. weight	Stavební délka Overall length	Přibližná hmotnost App. weight
DN	DN	± mm	N/mm	cm ²	mm	kg	mm	kg
mm	inch							
350	14"	12,5	176,0	1 104	260	12,0	150	44,0
350	14"	25,0	80,0	1 104	400	17,0	250	47,0
350	14"	37,5	59,0	1 104	480	20,0	320	49,0
350	14"	50,0	46,0	1 104	590	25,0	390	51,0
350	14"	62,5	42,0	1 104	690	29,0	420	52,0
400	16"	12,5	377,0	1 445	290	15,0	180	54,0
400	16"	25,0	269,0	1 445	370	20,0	230	56,0
400	16"	37,5	209,0	1 445	430	22,0	270	58,0
400	16"	50,0	145,0	1 445	570	29,0	370	60,0
400	16"	62,5	126,0	1 445	680	34,0	410	65,0
500	20"	12,5	415,0	2 219	290	19,0	190	70,0
500	20"	25,0	296,0	2 219	370	25,0	230	75,0
500	20"	37,5	231,0	2 219	430	28,0	280	75,0
500	20"	50,0	160,0	2 219	570	36,0	370	80,0
500	20"	62,5	138,0	2 219	680	43,0	420	85,0
600	24"	12,5	442,0	3 158	290	23,0	190	90,0
600	24"	25,0	316,0	3 158	370	30,0	230	95,0
600	24"	37,5	246,0	3 158	430	34,0	280	95,0
600	24"	50,0	170,0	3 158	570	44,0	370	100,0
600	24"	62,5	147,0	3 158	680	53,0	420	105,0
700	28"	12,5	461,0	4 265	290	27,0	190	105,0
700	28"	25,0	329,0	4 265	370	34,0	230	110,0
700	28"	37,5	256,0	4 265	430	38,0	280	115,0
700	28"	50,0	177,0	4 265	570	50,0	370	120,0
700	28"	62,5	154,0	4 265	680	60,0	420	125,0
800	32"	12,5	472,0	5 535	290	31,0	190	130,0
800	32"	25,0	337,0	5 535	370	39,0	230	135,0
800	32"	37,5	262,0	5 535	430	44,0	280	140,0
800	32"	50,0	182,0	5 535	570	58,0	370	145,0
800	32"	62,5	157,0	5 535	680	70,0	420	150,0
900	36"	12,5	479,0	6 971	290	35,0	190	145,0
900	36"	25,0	342,0	6 971	370	45,0	230	150,0
900	36"	37,5	266,0	6 971	430	50,0	280	155,0
900	36"	50,0	184,0	6 971	570	65,0	370	165,0
900	36"	62,5	160,0	6 971	680	80,0	420	165,0
1000	40"	12,5	438,0	8 588	290	39,0	190	160,0
1000	40"	25,0	313,0	8 588	370	50,0	230	165,0
1000	40"	37,5	243,0	8 588	430	56,0	280	170,0
1000	40"	50,0	168,0	8 588	570	75,0	370	180,0
1000	40"	62,5	146,0	8 588	680	90,0	420	185,0
1100	44"	12,5	439,0	10 381	290	52,0	190	170,0
1100	44"	25,0	314,0	10 381	370	65,0	230	175,0
1100	44"	37,5	244,0	10 381	430	75,0	280	180,0
1100	44"	50,0	169,0	10 381	570	95,0	370	195,0
1100	44"	62,5	146,0	10 381	680	115,0	420	200,0
1200	48"	12,5	598,0	12 307	290	59,0	190	185,0
1200	48"	25,0	427,0	12 307	370	75,0	230	195,0
1200	48"	37,5	332,0	12 307	430	85,0	280	200,0
1200	48"	50,0	230,0	12 307	570	110,0	370	215,0
1200	48"	62,5	199,0	12 307	680	130,0	420	220,0



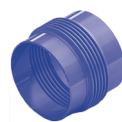
MWA



MFA

PN 1

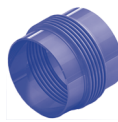
Jmenovitá světllost Nominal diameter	Jmenovitá světllost Nominal diameter	Axiální posuv Axial movement	Axiální tuhost Spring rate	Efektivní průřez Effective area	Stavební délka Overall length	Přibližná hmotnost App. weight	Stavební délka Overall length	Přibližná hmotnost App. weight
DN	DN	± mm	N/mm	cm ²	mm	kg	mm	kg
mm	inch							
1300	52"	25,0	510,0	14 565	280	65,0	180	200,0
1300	52"	37,5	306,0	14 565	400	85,0	260	215,0
1300	52"	50,0	219,0	14 565	580	125,0	340	225,0
1300	52"	62,5	170,0	14 565	700	150,0	410	240,0
1300	52"	75,0	139,0	14 565	830	175,0	490	250,0
1400	56"	25,0	548,0	16 783	280	70,0	180	215,0
1400	56"	37,5	329,0	16 783	400	95,0	260	230,0
1400	56"	50,0	235,0	16 783	580	135,0	340	245,0
1400	56"	62,5	183,0	16 783	700	165,0	410	255,0
1400	56"	75,0	149,0	16 783	830	190,0	490	270,0
1500	60"	25,0	585,0	19 158	280	75,0	190	265,0
1500	60"	37,5	351,0	19 158	400	100,0	260	280,0
1500	60"	50,0	251,0	19 158	580	145,0	340	295,0
1500	60"	62,5	195,0	19 158	700	175,0	420	310,0
1500	60"	75,0	160,0	19 158	830	205,0	490	325,0
1600	64"	25,0	622,0	21 689	280	80,0	190	285,0
1600	64"	37,5	373,0	21 689	400	105,0	260	300,0
1600	64"	50,0	267,0	21 689	580	155,0	340	315,0
1600	64"	62,5	207,0	21 689	700	185,0	420	330,0
1600	64"	75,0	170,0	21 689	830	220,0	490	345,0
1800	72"	25,0	697,0	27 224	280	90,0	190	335,0
1800	72"	37,5	418,0	27 224	400	120,0	270	350,0
1800	72"	50,0	299,0	27 224	580	175,0	340	370,0
1800	72"	62,5	232,0	27 224	700	210,0	420	385,0
1800	72"	75,0	190,0	27 224	830	245,0	500	405,0
2000	80"	25,0	772,0	33 387	280	100,0	190	370,0
2000	80"	37,5	463,0	33 387	400	135,0	270	390,0
2000	80"	50,0	331,0	33 387	580	195,0	340	410,0
2000	80"	62,5	257,0	33 387	700	235,0	420	425,0
2000	80"	75,0	211,0	33 387	830	270,0	500	445,0
2200	88"	25,0	847,0	40 179	280	105,0	200	460,0
2200	88"	37,5	508,0	40 179	400	145,0	270	485,0
2200	88"	50,0	363,0	40 179	580	215,0	350	505,0
2200	88"	62,5	282,0	40 179	700	255,0	420	525,0
2200	88"	75,0	231,0	40 179	830	300,0	500	545,0
2400	96"	25,0	922,0	47 599	280	115,0	200	530,0
2400	96"	37,5	553,0	47 599	400	160,0	280	550,0
2400	96"	50,0	395,0	47 599	580	230,0	350	575,0
2400	96"	62,5	307,0	47 599	700	280,0	430	600,0
2400	96"	75,0	251,0	47 599	830	325,0	500	620,0
2600	104"	25,0	997,0	55 647	280	125,0	200	600,0
2600	104"	37,5	598,0	55 647	400	170,0	280	620,0
2600	104"	50,0	427,0	55 647	580	250,0	360	650,0
2600	104"	62,5	332,0	55 647	700	300,0	430	675,0
2600	104"	75,0	272,0	55 647	830	355,0	510	700,0
2800	112"	25,0	1 072,0	64 323	280	150,0	210	770,0
2800	112"	37,5	643,0	64 323	400	205,0	280	805,0
2800	112"	50,0	459,0	64 323	580	295,0	360	840,0
2800	112"	62,5	357,0	64 323	700	355,0	440	870,0
2800	112"	75,0	292,0	64 323	830	415,0	510	905,0
3000	120"	25,0	1 147,0	73 628	280	160,0	210	825,0
3000	120"	37,5	688,0	73 628	400	220,0	280	860,0
3000	120"	50,0	492,0	73 628	580	315,0	360	895,0
3000	120"	62,5	382,0	73 628	700	380,0	440	930,0
3000	120"	75,0	313,0	73 628	830	445,0	510	965,0


MWA

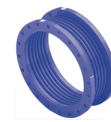
MFA

PN 1

Jmenovitá světllost Nominal diameter	Jmenovitá světllost Nominal diameter	Axiální posuv Axial movement	Axiální tuhost Spring rate	Efektivní průřez Effective area	Stavební délka Overall length	Přibližná hmotnost App. weight	Stavební délka Overall length	Přibližná hmotnost App. weight
DN	DN	± mm	N/mm	cm ²	mm	kg	mm	kg
mm	inch							
3200	128"	25,0	1 222,0	83 561	280	170,0	210	915,0
3200	128"	37,5	733,0	83 561	400	230,0	290	950,0
3200	128"	50,0	524,0	83 561	580	335,0	360	990,0
3200	128"	62,5	407,0	83 561	700	405,0	440	1 030,0
3200	128"	75,0	333,0	83 561	830	475,0	520	1 070,0
3400	136"	25,0	1 581,0	94 433	280	210,0	220	1 040,0
3400	136"	37,5	949,0	94 433	400	295,0	290	1 100,0
3400	136"	50,0	678,0	94 433	580	420,0	370	1 160,0
3400	136"	62,5	527,0	94 433	700	515,0	440	1 215,0
3400	136"	75,0	431,0	94 433	830	605,0	520	1 275,0
3600	144"	25,0	1 672,0	105 640	280	220,0	220	1 195,0
3600	144"	37,5	1 003,0	105 640	400	310,0	300	1 255,0
3600	144"	50,0	717,0	105 640	580	445,0	370	1 320,0
3600	144"	62,5	557,0	105 640	700	545,0	450	1 380,0
3600	144"	75,0	456,0	105 640	830	640,0	520	1 440,0
3800	152"	25,0	1 764,0	117 476	280	235,0	220	1 285,0
3800	152"	37,5	1 058,0	117 476	400	330,0	300	1 350,0
3800	152"	50,0	756,0	117 476	580	470,0	370	1 415,0
3800	152"	62,5	588,0	117 476	700	575,0	450	1 480,0
3800	152"	75,0	481,0	117 476	830	675,0	520	1 545,0
4000	160"	25,0	1 855,0	129 941	280	245,0	220	1 400,0
4000	160"	37,5	1 113,0	129 941	400	345,0	300	1 470,0
4000	160"	50,0	795,0	129 941	580	495,0	380	1 540,0
4000	160"	62,5	618,0	129 941	700	605,0	450	1 605,0
4000	160"	75,0	506,0	129 941	830	715,0	530	1 675,0
4200	168"	25,0	1 946,0	143 033	280	255,0		
4200	168"	37,5	1 168,0	143 033	400	360,0		
4200	168"	50,0	834,0	143 033	580	520,0		
4200	168"	62,5	649,0	143 033	700	635,0		
4200	168"	75,0	531,0	143 033	830	750,0		
4500	180"	25,0	2 495,0	163 857	280	280,0		
4500	180"	37,5	1 497,0	163 857	400	390,0		
4500	180"	50,0	1 069,0	163 857	580	570,0		
4500	180"	62,5	832,0	163 857	700	695,0		
4500	180"	75,0	680,0	163 857	830	815,0		
5000	200"	25,0	2 768,0	201 695	280	310,0		
5000	200"	37,5	1 661,0	201 695	400	435,0		
5000	200"	50,0	1 186,0	201 695	580	630,0		
5000	200"	62,5	923,0	201 695	700	770,0		
5000	200"	75,0	755,0	201 695	830	910,0		
5500	220"	25,0	3 041,0	243 459	280	340,0		
5500	220"	37,5	1 824,0	243 459	400	480,0		
5500	220"	50,0	1 303,0	243 459	580	695,0		
5500	220"	62,5	1 014,0	243 459	700	845,0		
5500	220"	75,0	829,0	243 459	830	1 000,0		
6000	240"	25,0	3 314,0	289 150	280	375,0		
6000	240"	37,5	1 988,0	289 150	400	520,0		
6000	240"	50,0	1 420,0	289 150	580	760,0		
6000	240"	62,5	1 105,0	289 150	700	925,0		
6000	240"	75,0	904,0	289 150	830	1 090,0		



MWA



MFA